



# GMT MONTHLY MEMBERSHIP PROGRESS REPORT

Results as of: 3/31/2019

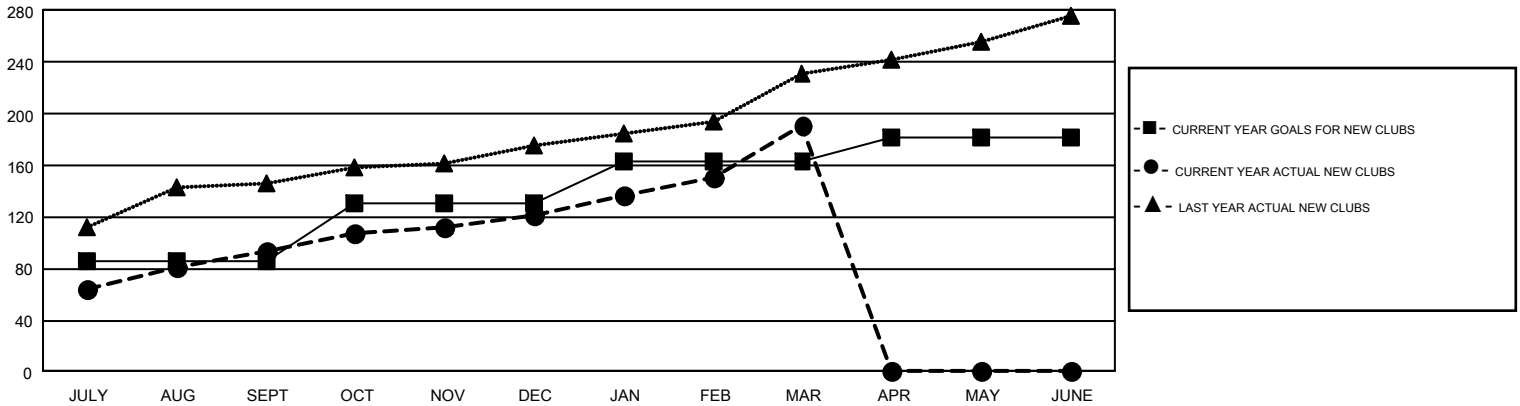
## GMT Constitutional Area 6, Group A

GMT: SWADESH RANJAN SAHA

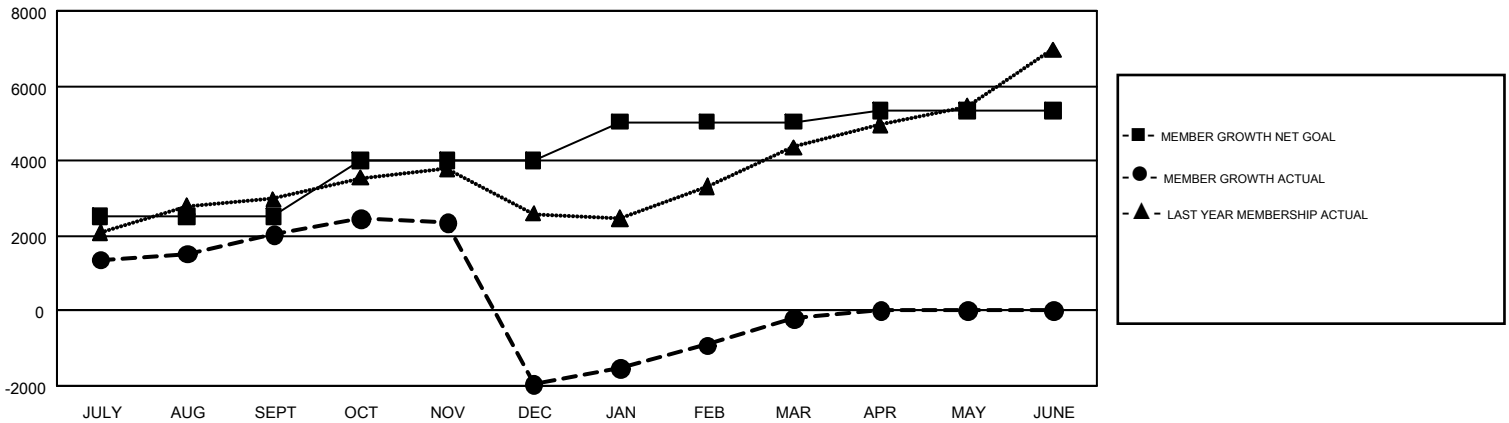
REPORT DOES NOT INCLUDE CLUBS IN UNDISTRICTED AREAS.

Clubs				Members			
RESULTS FOR 2018-2019				RESULTS FOR 2018-2019			
QUARTER	NEW CLUB GOAL	NEW CLUBS	DROPPED CLUBS	QUARTER	MEMBER GROWTH NET GOAL	MEMBER GROWTH ACTUAL	DROPPED MEMBERS ACTUAL (including transfers)
JULY/AUG/SEPT	86	94	22	JULY/AUG/SEPT	2,525	3,850	1,649
OCT/NOV/DEC	45	27	106	OCT/NOV/DEC	1,470	2,240	6,139
JAN/FEB/MAR	32	70	19	JAN/FEB/MAR	1,044	3,123	951
APR/MAY/JUNE	18	0	0	APR/MAY/JUNE	300	0	0

GOALS AND ACTUAL NEW CLUBS CUMULATIVE



GOALS AND ACTUAL MEMBERS CUMULATIVE



DROPPED CLUBS: 147	925 CLUBS OF 1,854 ADDED 1 OR MORE NEW MEMBERS	<b>GENDER DISTRIBUTION</b> MALE 42,204 (72.80%) FEMALE 15,769 (27.20%)
<b>DROPPED MEMBERS</b> DECEASED 97 CLUB CANCELLED 4,089 OTHER 4,554 <b>TOTAL 8,740</b>	<a href="#">CLICK HERE FOR CUMULATIVE MEMBERSHIP DATA</a>	TOTAL FAMILY UNIT MEMBERS 26,398 FAMILY MEMBERS PAYING HALF DUES 16,168